

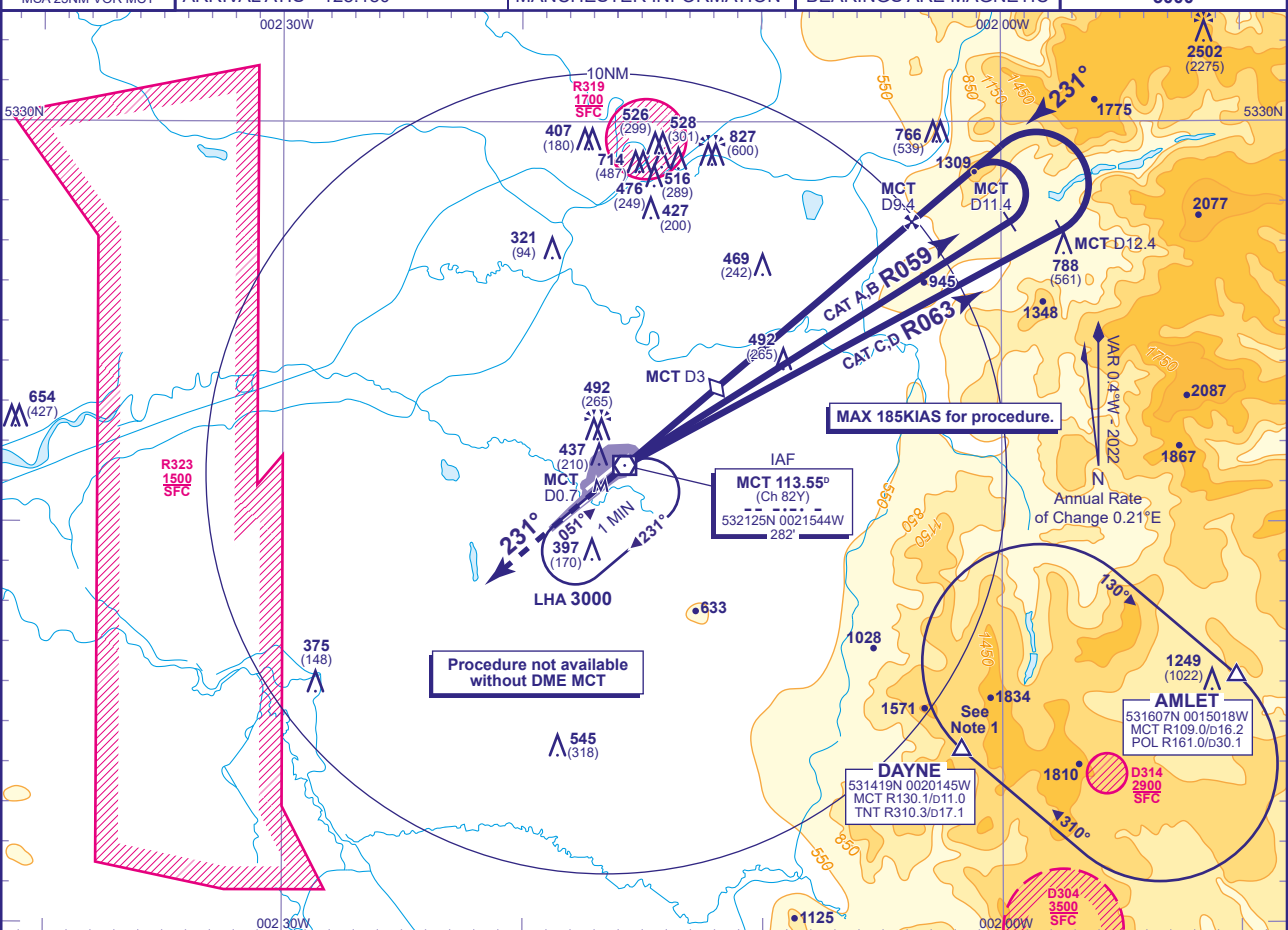
APPROACH STAFF - ICAO

MANCHESTER
VOR/DME
RWY 23L
 (ACFT CAT A,B,C,D)



APP	118.580, 135.005	MANCHESTER RADAR	AD ELEVATION	257
	121.355	MANCHESTER DIRECTOR	THR ELEVATION	227
TWR	118.630, 119.405	MANCHESTER TOWER	OBSTACLE ELEVATION	2502 AMSL (2275) (ABOVE THR)
	121.855, 121.705	MANCHESTER GROUND		
ARRIVAL ATIS	128.180	MANCHESTER INFORMATION	BEARINGS ARE MAGNETIC	

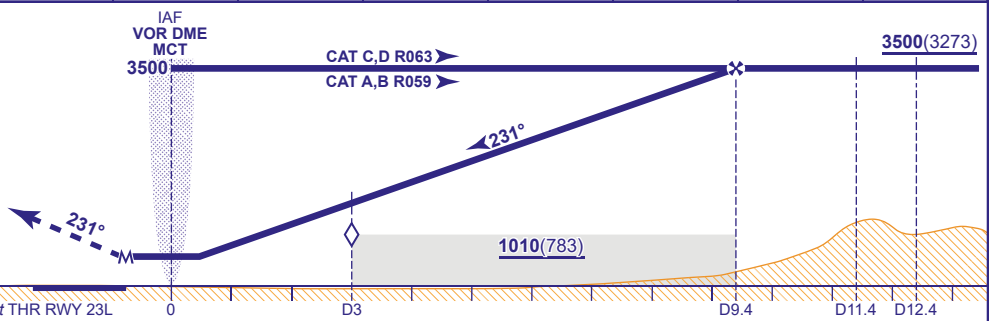
TRANSITION ALTITUDE
5000



RECOMMENDED PROFILE Gradient 5.2%, 320FT/NM

DME MCT	9	8	7	6	5	4	3(SDF)	2	1
ALT(HGT)	3370(3143)	3050(2823)	2730(2503)	2420(2193)	2100(1873)	1780(1553)	1460(1233)	1140(913)	820(593)

MAPt MCT DME 0.7 (THR RWY 23L)
 Climb straight ahead to **3500** continue as directed.
 RCF: From VOR MCT DME 10 at **3500**, (if below **3500**) continue climb in left turn to **3500**, turn left onto track 068° continuing climb to **FL70** to join the DAYNE hold.



Aircraft Category	A	B	C	D	Rate of descent	G/S KT	160	140	120	100	80
OCA (OCH)	Procedure	690(463)	690(463)	690(463)	690(463)	FT/MIN	850	750	640	530	430
VM(C)OCA (OCH AAL)	Total Area	790(533)	820(563)	1110(853)	1110(853)						

NOTE 1 DAYNE HOLD:- Limiting outboard distance MCT DME 16/TNT DME 14. Minimum holding level is FL70.
2 Procedure restricted to maximum 185KIAS.

CHANGE (8/25): TNT VOR RECALIBRATED. DAYNE HOLD REVISED. AMLET/DAYNE WAYPOINT VOR RADIALS REVISED.